

Kindness and Co-operation	Thankfulness	Friendship and Sharing	Respect	Unity	Responsibility
Hope and Peace	Patience and Perseverance	Trust and Honesty	Happiness	Courage	



MAPLE TREE
PRIMARY SCHOOL
Climbing the branches of success

Newsletter

Friday 7th January 2022



MESSAGE FROM THE HEAD

Happy New Year to you all! I hope you all managed to have a good Christmas break and stayed well. It has been lovely to welcome the children back this week and to see them settled into their learning so quickly is fab; productivity is good! It is alarming though, to see the rapidly growing weekly Covid figures released by the local authority and it is something that we are definitely feeling in school at the moment.

As you will be aware, across the country places of work are struggling with the numbers of staff who are having to self-isolate or are poorly. We are not unlike any of these but we are doing everything we can to ensure that the children have access to school everyday. When classes are impacted by staff absence we will always do what we can to ensure that there are the right number of staff in the classes to match the ratios of the children, however, this may mean that we are not always able to provide the same levels of teaching we would normally and ask for your continued understanding at this time.

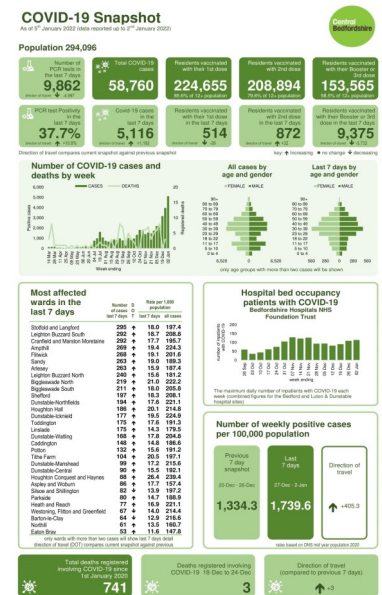
The most recent guidance that came out has not led to any major changes for us in school but we would ask that you continue to be cautious outside of school so that rising cases do not impact on our staffing levels. Our staff are self testing with lateral flow tests at least twice a week and, in order to protect us, you may consider doing the same with your families if you are not already doing so.

I certainly do not intend this newsletter to be a gloomy start to the year - quite the opposite in fact! We are ready and raring to go with the Spring Term. This is when we really see the children starting to make strides in their learning and are keen to watch their progress.

We are also celebrating the installation of our new toilets in KS2. Work was completed on these just before Christmas and work on KS1 has begun in earnest this week. So far pupil feedback has been very positive.



I hope you all have a good weekend.



Maple Tree Primary School, Hawk Drive, Sandy, Bedfordshire, SG19 2WA

Tel: 01767 699806 email: office@mapletreepriamaryschool.com

www.mapletreepriamaryschool.com

Head: Mrs Cath Bainbridge Deputy Head: Miss Amy Hyde

Health and Safety Reminder



PARKING



The School car park is for school staff and disabled drivers only before and after school. Please do not drive in to drop your child off or pick them up.

Please also be respectful of our neighbours so they are not inconvenienced.

If you have any questions regarding this please contact the school office.

Maple Tree is a designated Safe Space for victims of domestic abuse to use in order to access support.

If you need to use this, please come to reception and ask to use the 'Safe Space' and a member of staff will guide you to the allocated space.



Safe Space

What is a Safe Space?

- a place for you to go if you need to access support
- a place where you can contact a domestic abuse support service who will be able to help you safely

For more information, speak to a member of staff or contact BDAP@centralbedfordshire.gov.uk



Attendance Awards

Our target is 97%

The best attendance award is presented to:

Mulberries (Pre-School) Blossoms 75% Berries 97.5%	Fir (YR) 99.4%
Yew (Y1) ★ 100%	Aspen (Y2) 99.4%
Hawthorn(Y3) 98.4%	Poplar (Y4) 97.8%
Rowan (Y4) 92.9%	Cherry (Y5) 95.7%
Elder (Y6) 98.6%	Overall School inc preschool = 95.47% Overall School excl pre-school = 97.78%

DATES FOR THE DIARY

Wednesday 19th January 4-6.30pm Berries Parents' Evening

Thursday 20th January 4-6.30pm Berries Parents' Evening

Week beg 31st January - Year 6 Mock SATS

Week beg 7th February Children's Mental Health week

Wednesday 9th and Thursday 10th February – Parents' evenings

Week beg Monday 14th February Half Term Week

Thursday 3rd March World Book Day

Friday 1st April Term Ends

Easter Holidays Monday 4th - Tuesday 19th April

Tuesday 19th April INSET day

Wednesday 20th April Children return

