

Kindness and Co-operation	Thankfulness	Friendship and Sharing	Respect	Patience and Perseverance	Responsibility
Hope and Peace	Unity	Trust and Honesty	Happiness	Courage	



**MAPLE TREE  
PRIMARY SCHOOL**

*Climbing the branches of success*

## Newsletter

Friday 11th September 2020

### MESSAGE FROM THE HEAD



It is so good to be able to officially welcome you all back! It has been a great week and so lovely to have the children return to us. They have settled in well and are really enjoying work on a whole school topic that they are doing as part of their transition. I am incredibly grateful to you for the support you are showing us with our staggered pick up and drop offs. We realise that this is different for you, and may be an inconvenience for some, but it is really helping to keep us all safe. I would remind you please that there should be no one on site before 8.40am and please do not turn up too early for your pick up time either. We are monitoring the protocols we have put in place and will tweak these should we need to, but for next week the system remains the same.

As mentioned above, all children are taking part in a 2-week unit based on a quality text - Here We Are: Notes for Living on Planet Earth by Oliver Jeffers. This incorporates all aspects of the curriculum whilst also encouraging the children to talk about their own experiences. We hope to be able to showcase some of the work covered in next week's newsletter and on the website so that you can see what is being achieved.

Our main emphasis moving forwards is on 'Step Up September'. This is the plan we are using to ensure that we are supporting the children in their full time return and allows us the opportunity to re-establish routines, relationships, expectations, standards and values. As part of this, we are considering the needs of all the children and whilst most will access universal support, there will be some who require a little more focused, or perhaps individual support. This should help to set them back on the path to make progress through the course of the year. This does not mean that we expect all children to have caught up by the end of September or that we will no longer be supporting the children with transition in October, but the handout that accompanies this newsletter will give you a more detailed look at some of the things we are doing now. It demonstrates our commitment to ensuring we are doing what we can to settle the children so we can drive for progress as soon as they are ready.

There are many new safety measures that we are also having to get used to in school and one of those is the use of shared resources such as reading books. For the first two weeks of this term, children will not be bringing home reading books, nor will homework be set. Homework will then be set which involves small amounts of work being brought between home and school to lessen opportunities for the spreading of germs and reading books will be sent home from Monday 21st September. There may be an occasional small delay in changing these books and any book which is returned will be quarantined for 72 hours before being passed on to anyone else but we ask you to bear with us whilst we get used to new routines in school.

*Continued over the page...*

Maple Tree Primary School, Hawk Drive, Sandy, Bedfordshire, SG19 2WA

Tel: 01767 699806 email: [office@mapletreepriamaryschool.com](mailto:office@mapletreepriamaryschool.com)

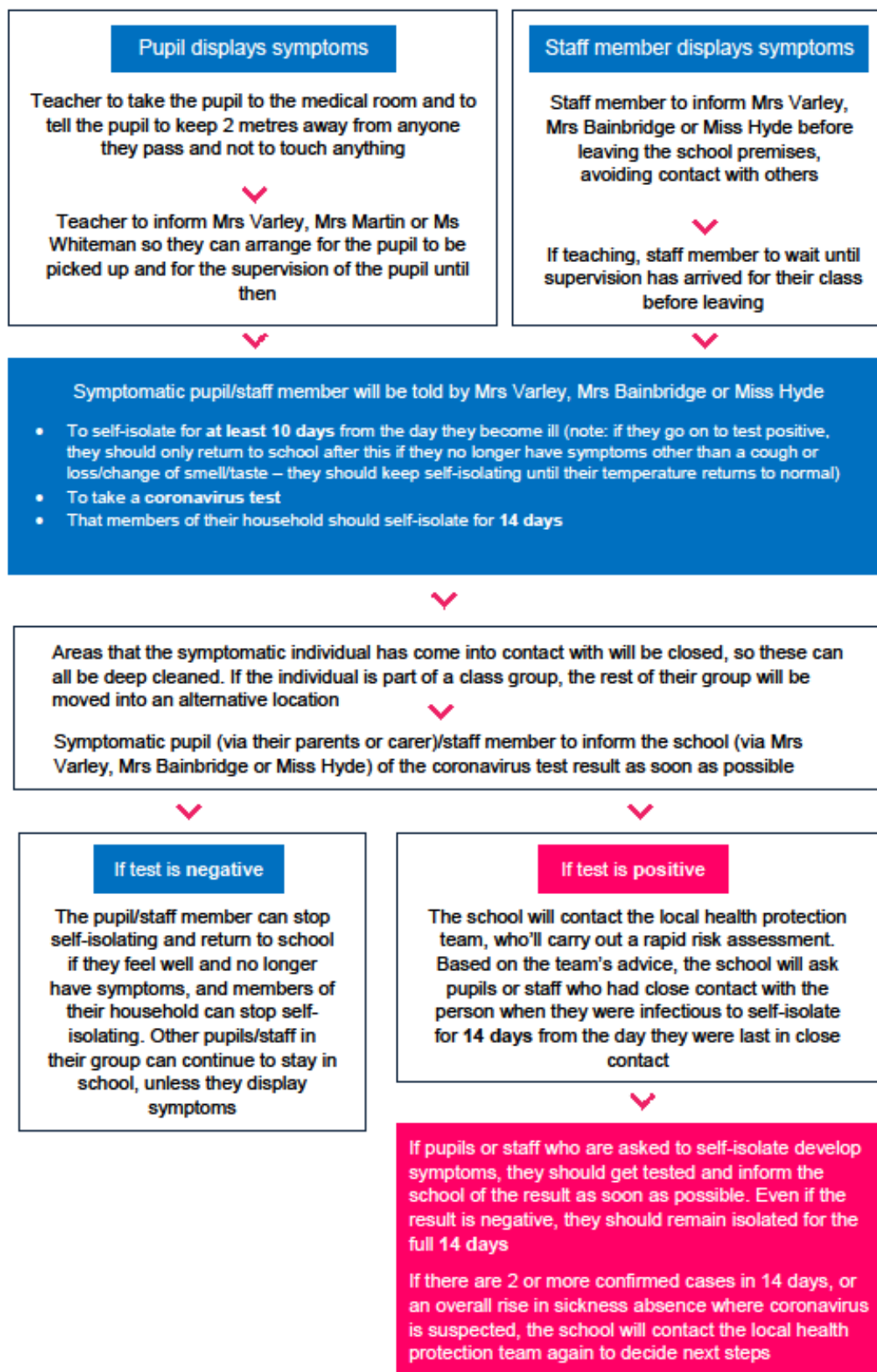
[www.mapletreepriamaryschool.com](http://www.mapletreepriamaryschool.com)

Head: Mrs Cath Bainbridge

Deputy Head: Miss Amy Hyde

We can see from the news that the virus is still prevalent and recognising the symptoms as we head towards the coughs and colds season is really important. We have produced a simple flow chart to help us all determine what to do if showing symptoms such as a high temperature, new or continuous cough, loss of taste/smell.

### FLOW CHART TO FOLLOW IF DISPLAYING COVID-19 SYMPTOMS



Last updated 08.09.20

Please adhere to these instructions to help keep everyone safe.

# Thank You!

On a completely different, and Covid-unrelated, note, I want to pass on massive thanks to the Friends of Maple Tree for their generous donation towards the expansion of the Mulberries pre-school playground. The additional play space is going to make such a difference to both the children and staff and I cannot wait to see it full of our youngest children as they return to us next week.



Next week I hope to be able to bring you more information about the coming term and things that we are putting in place. In the meantime, other information should be available in the reopening handbook that has been sent out but if there is anything else that you specifically want then please let me know and I will do my best to answer your questions.

Have a lovely weekend and enjoy the spell of sunshine that is coming!

