

Co-operation	Honesty	Freedom	Understanding	Hope	Thoughtfulness
Quality	Loyalty and Friendship	Patience	Tolerance	<b>Courage</b>	



# Weekly Newsletter

Friday 21<sup>st</sup> July 2017

## MESSAGE TO PARENTS AND CARERS FROM THE EXECUTIVE HEAD

I cannot believe we are now at the end of an academic year; where has the time gone? I have watched the children over the year grow both physically and emotionally. They are fortunate to have such supportive parents/carers who want the best for them. You have been pivotal in their academic development and enabled us, as a team, to instill a love of learning through our exciting topic based curriculum.

Our staff are remarkable, they have embraced all of the changes brought to the school under the leadership of the Senior Leadership Team this year and become more advanced practitioners. Higher end of year results across the school have been commended by our School Improvement Partner and the Local Authority.

Watching the Key Stage 2 production about war time evacuees highlighted how hard staff have worked to encourage all children to participate in an engaging and fun-filled performance which promotes history, geography, technology and the arts.

I am very proud of the growth of both pupils and staff and want to take this opportunity to congratulate them all. We are definitely on our way to becoming OUTSTANDING.

## Thank you!

Having reached the end of an incredibly busy year we want to share our thanks, so thank you to:

- the Friends of Maple Tree for everything you have done for the children this year – for the events you have run, the meetings you have held and the gifts you have given – you all help to make Maple Tree a very special place;
- our volunteers who kindly give up their own time to come in and support both children and staff. We are genuinely grateful to you for all you do;
- our Governors who work hard to help the school to improve and also give up their time for nothing to support at events and to attend long meetings! Thank you for all you do;
- to our staff who have worked tirelessly this year in all that they have done – you are an amazing group of people!
- to Mrs Lintott for the amazing mural she has created for us outside the library – this is loved by adults and children alike – you are a star!

And finally, thanks to you as parents for your continued support for us all here at Maple Tree – we couldn't do it without you!



Maple Tree Lower School, Hawk Drive, Sandy, Bedfordshire, SG19 2WA

Tel: 01767 699806 email: [mapletree@cbc.beds.sch.uk](mailto:mapletree@cbc.beds.sch.uk)

[www.mapletreelowerschool.com](http://www.mapletreelowerschool.com)

Executive Head: Mrs Kim McCamley


Head of School: Mrs Cath Bainbridge

Co-operation	Honesty	Freedom	Understanding	Hope	Thoughtfulness
Quality	Loyalty and Friendship	Patience	Tolerance	<b>Courage</b>	



# Weekly Newsletter

Friday 21<sup>st</sup> July 2017

HEADTEACHER'S AWARDS		★	★
★ ★ ★		★ ★ ★	<div style="border: 2px solid yellow; padding: 5px; text-align: center;"> <b>Freya J</b> </div>
<div style="border: 2px solid yellow; padding: 5px; text-align: center;"> <b>Lewis K</b> </div>	<div style="border: 2px solid yellow; padding: 5px; text-align: center;"> <b>Billy E</b> </div>	<div style="border: 2px solid yellow; padding: 5px; text-align: center;"> <b>William B</b> </div>	
<div style="border: 2px solid yellow; padding: 5px; text-align: center;"> <b>Eve B</b> </div>	<div style="border: 2px solid yellow; padding: 5px; text-align: center;"> <b>Emily B</b> </div>	<div style="border: 2px solid yellow; padding: 5px; text-align: center;"> <b>Drew W</b> </div>	
<div style="border: 2px solid yellow; padding: 5px; text-align: center;"> <b>Emma C</b> </div>	<div style="border: 2px solid yellow; padding: 5px; text-align: center;"> <b>Jake S</b> </div>	<div style="border: 2px solid yellow; padding: 5px; text-align: center;"> <b>Leigh H-F-T</b> </div>	
<div style="border: 2px solid yellow; padding: 5px; text-align: center;"> <b>Szymon A</b> </div>	<div style="border: 2px solid yellow; padding: 5px; text-align: center;"> <b>Riley H</b> </div>	<div style="border: 2px solid yellow; padding: 5px; text-align: center;"> <b>Lilah W</b> </div>	
<div style="border: 2px solid yellow; padding: 5px; text-align: center;"> <b>Max G</b> </div>	<div style="border: 2px solid yellow; padding: 5px; text-align: center;"> <b>Ellie G</b> </div>	<div style="border: 2px solid yellow; padding: 5px; text-align: center;"> <b>Chloe H</b> </div>	
<div style="border: 2px solid yellow; padding: 5px; text-align: center;"> <b>Grace S</b> </div>	<div style="border: 2px solid yellow; padding: 5px; text-align: center;"> <b>Freddie T</b> </div>	<div style="border: 2px solid yellow; padding: 5px; text-align: center;"> <b>Chanelle O'</b> </div>	

Co-operation	Honesty	Freedom	Understanding	Hope	Thoughtfulness
Quality	Loyalty and Friendship	Patience	Tolerance	<b>Courage</b>	

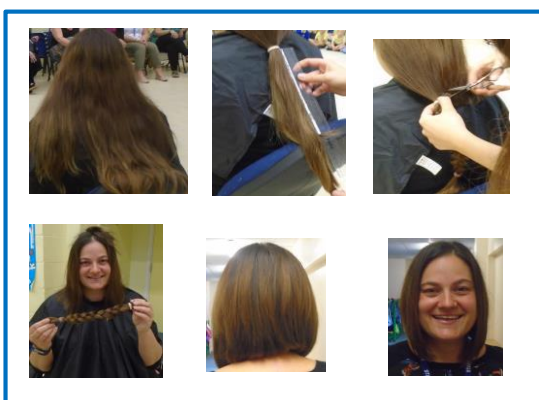
## Value of the Month – Courage

This month our value is all about Courage and this week there have been a number of opportunities for children and staff to demonstrate this.



KS2 were very brave performing their play to several audiences this week and did an amazing job.

Those children who have been ‘Green’ all year were given the chance to have a go at a very tall climbing wall this week as their reward.



Mrs Scott was incredibly brave and had her hair cut in front of the whole school whilst raising money for charity.

All of these show courage at their best and we are immensely proud of them all!

Co-operation	Honesty	Freedom	Understanding	Hope	Thoughtfulness
Quality	Loyalty and Friendship	Patience	Tolerance	<b>Courage</b>	



# Weekly Newsletter

Friday 21<sup>st</sup> July 2017

## House Point Winners



Congratulations to our overall winners this year...

**Doves**



Little Saplings celebrated their end of year with a tea party and it looks like they all had fun!

## So long, farewell...



Along with our thanks we also need to say some goodbyes. We are saying goodbye to some of our lovely children who are moving away and we wish you well in your new schools.

We are also saying goodbye to...

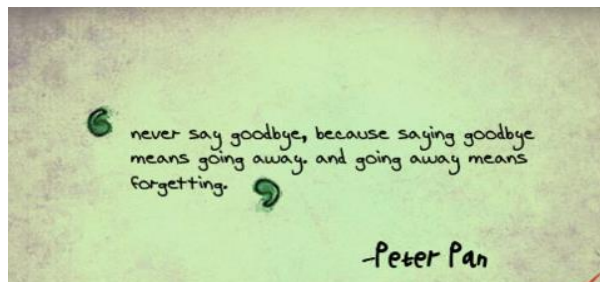
Mrs Hyndman



and...  
Year 4



Good luck as you all move to your new schools!



**Have a lovely summer holiday! See you on Tuesday 5<sup>th</sup> September!**



Maple Tree Lower School, Hawk Drive, Sandy, Bedfordshire, SG19 2WA

Tel: 01767 699806 email: [mapletree@cbc.beds.sch.uk](mailto:mapletree@cbc.beds.sch.uk)

[www.mapletreelowerschool.com](http://www.mapletreelowerschool.com)

Executive Head: Mrs Kim McCamley

Head of School: Mrs Cath Bainbridge